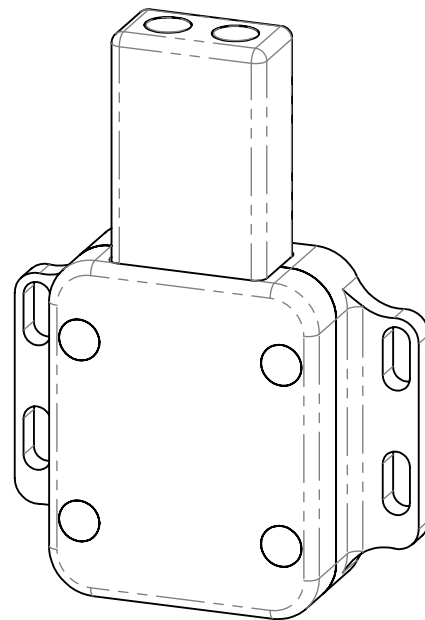
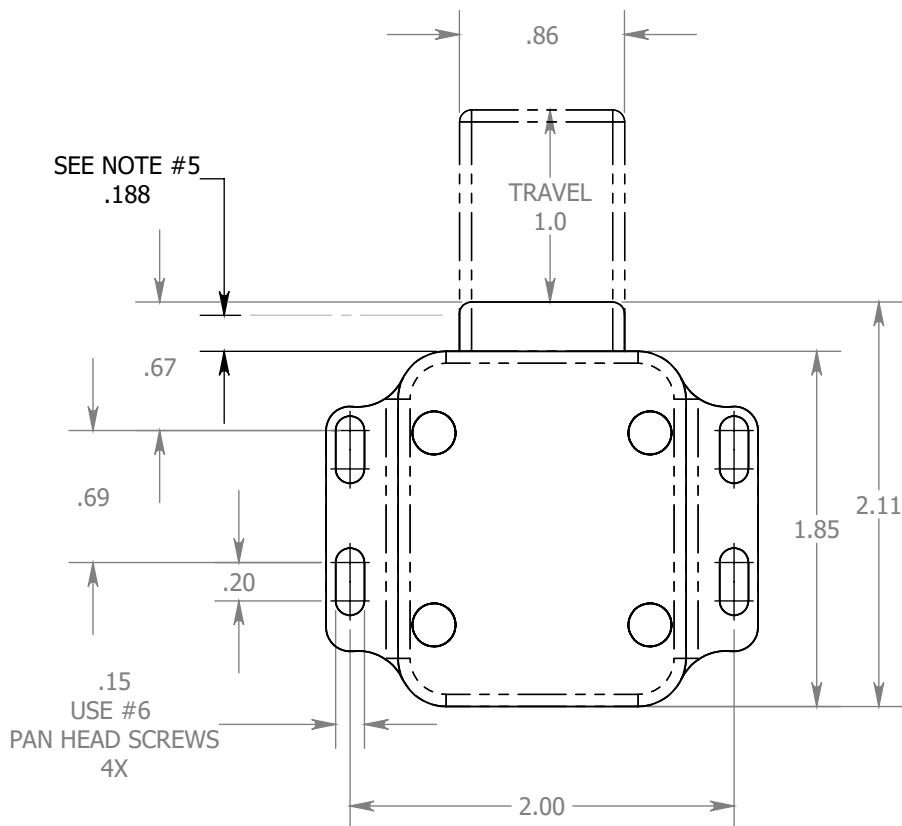
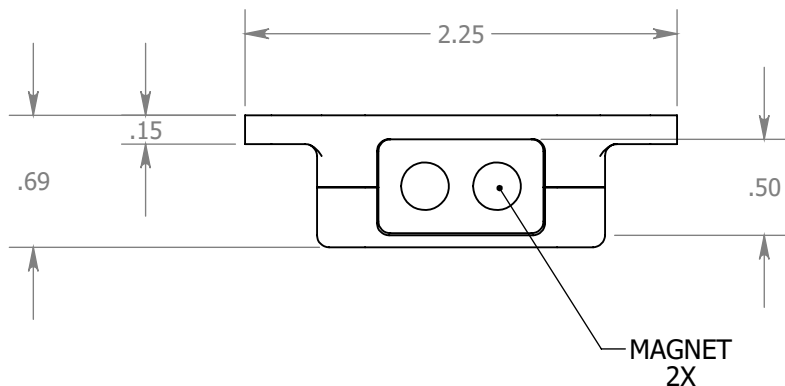
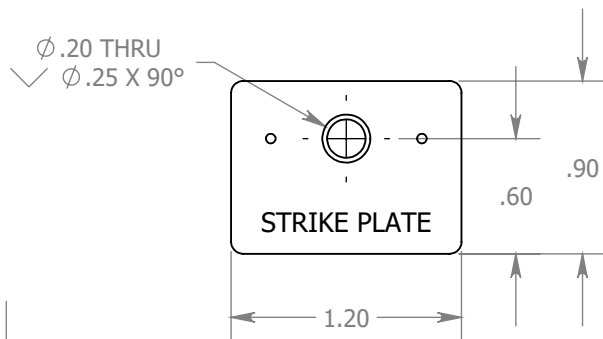


NOTES:

1. SPRING FORCE: 10 Lbs
2. MAGNETIC PULL: 6 Lbs
3. TRAVEL REQUIRED TO UNLOCK: 0.08" (2MM)
4. STRIKE PLATE PROVIDED,
INSTALL USING #6 FLAT HEAD SCREW
USE #6 PAN HEAD SCREWS TO FASTEN LATCH
TO STRUCTURE.
5. * A STOP-BLOCK OR DOOR-STOP MUST BE USED.
LOCATE 0.187" FORWARD OF THE LATCH,
ADJUST LATCH LOCATION USING FASTENER
SLOTS.

REVISIONS		DATE
IR	INITIAL RELEASE	3/15/05
A	REMOVED CORNERS FOR MFG PROCESS	9/15/2013
B	NOTE 5 ADDED	20200424
C	Added Dimension 2.11, Overall length when latched	220200910
D	Discontinue clear anodize option	03012022



<p>PROPRIETARY AND CONFIDENTIAL</p> <p>THE INFORMATION CONTAINED IN THIS DRAWING IS THE SOLE PROPERTY OF SAINT LOUIS DESIGNS. ANY REPRODUCTION IN PART OR AS A WHOLE WITHOUT THE WRITTEN PERMISSION OF SAINT LOUIS DESIGNS IS PROHIBITED.</p>			UNLESS SPECIFIED OTHERWISE DIMENSIONS ARE IN INCHES TOLERANCES: ANGULAR: ±1° TWO PLACE DECIMAL ±0.01 THREE PLACE DECIMAL ±0.005 SURFACE FINISH: 32 RMA		NAME	DATE	<p>Saint Louis Designs, Inc.</p> <p>PO BOX 3400, Austin, TX78764 512-472-4711, www.saintlouisdesigns.com</p> <p>PUSHER, LATCHING</p> <p>PATENT: 6,669,250</p> <table><tr><td>SIZE</td><td>DWG. NO.</td><td>REV.</td></tr><tr><td>A</td><td>20125LP</td><td>D</td></tr><tr><td>SCALE:1:1</td><td>WEIGHT:</td><td>SHEET 1 OF 1</td></tr></table>		SIZE	DWG. NO.	REV.	A	20125LP	D	SCALE:1:1	WEIGHT:	SHEET 1 OF 1
	SIZE	DWG. NO.		REV.													
	A	20125LP		D													
	SCALE:1:1	WEIGHT:		SHEET 1 OF 1													
				DRAWN	MSTL	3/15/05											
			CHECKED														
			ENG APPR.														
			MFG APPR.	MSTL	3/15/05												
			Q.A.														
			COMMENTS:														
		MATERIAL	VARIOUS														
	DEBUR AND BREAK SHARP EDGES	FINISH	ANODIZED BLACK														
		DO NOT SCALE DRAWING															